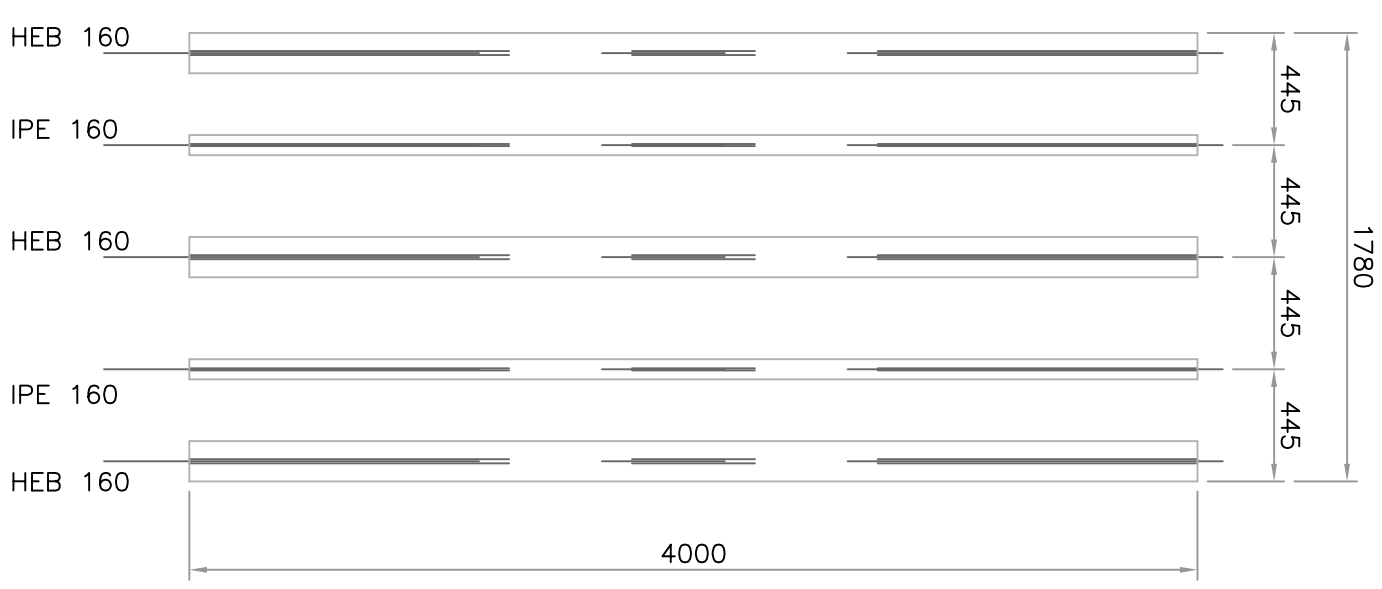
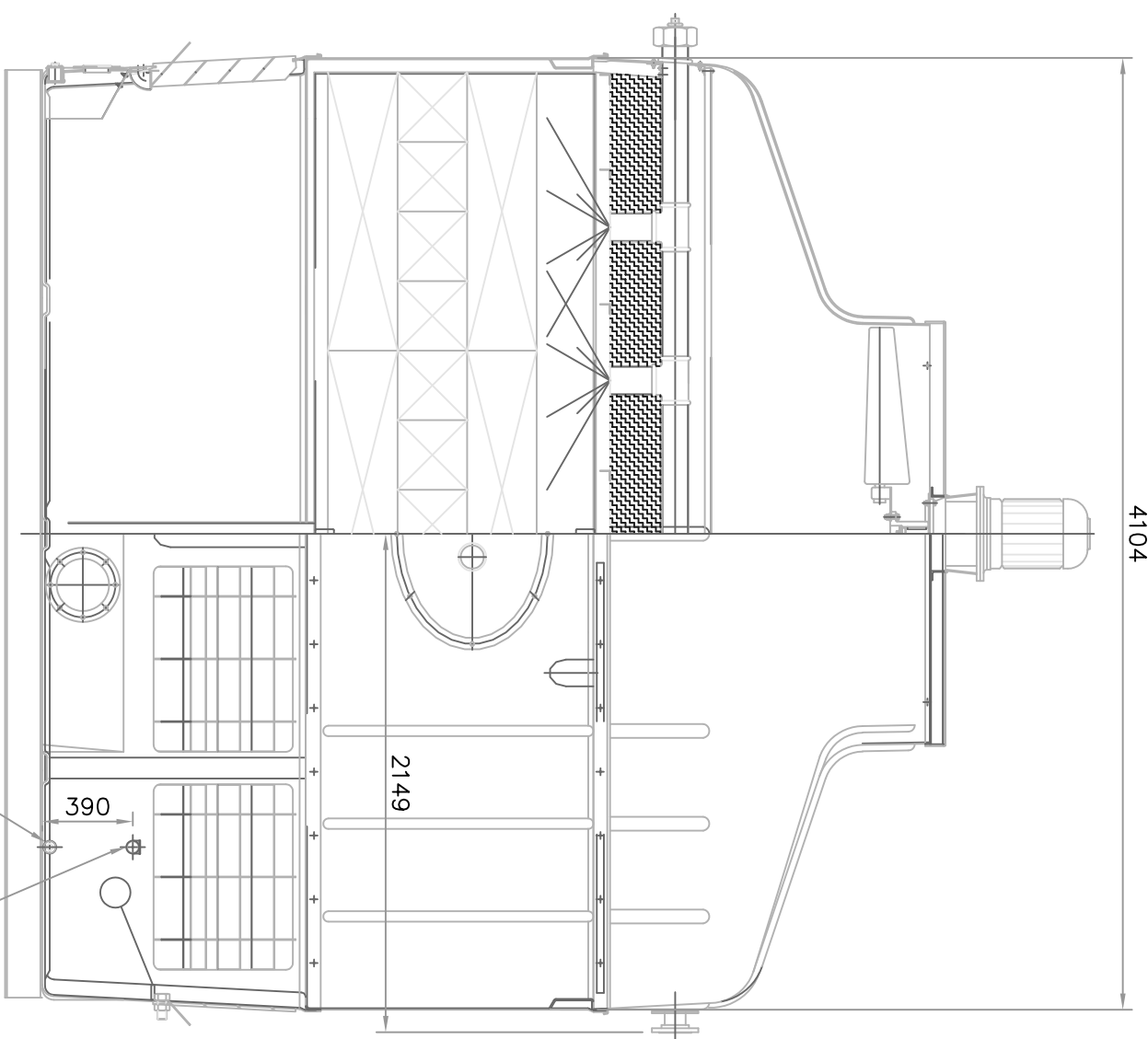
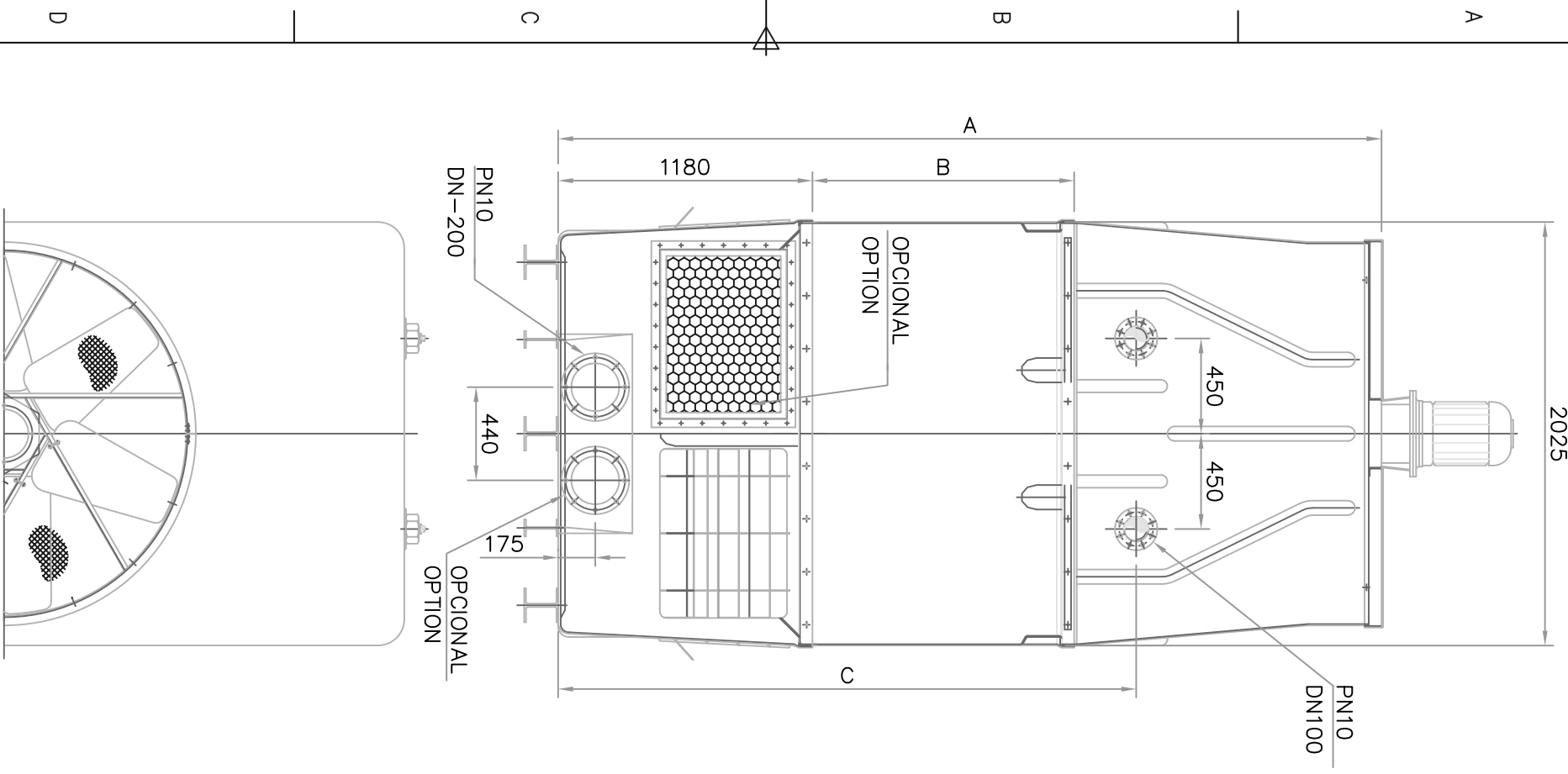


1

2

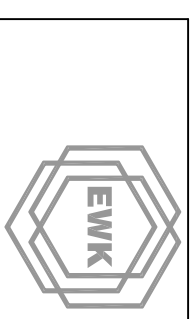
3

4



BANCADA A TITULO INFORMATIVO  
STRUCTURE FOR INFORMATION

TORRE TOWER	A (mm)	B (mm)	C (mm)	Peso en vacío Net Weight (Kg)	Peso servicio (Kg) Operating weight
EWK 900/09	3770	1150	2625	1600	6400
EWK 900/12	3980	1450	2925	1750	6525
EWK 900/15	4280	1750	3225	1925	6675



ESCALA  
1:30  
U.DIM. mm

EWK 900  
NOMBRE: FELIPE DEL OLMO  
N° 900-A/360

D

C

B

A