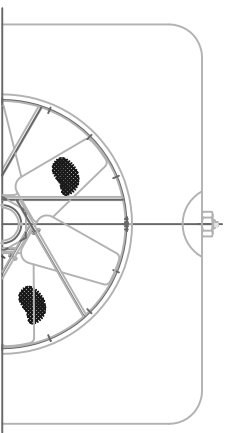




BANCADA A TITULO INFORMATIVO  
STRUCTURE FOR INFORMATION



TORRE TOWER	A (mm)	B (mm)	C (mm)	Peso en vacío Net Weight (Kg)	Peso servicio (Kg) Operating weight
EWK 036/03	1280	340	1035	53	145
EWK 036/06	1580	640	1345	59	155

	ESCALA 1:20	EWK 036
	U.DIM. mm	
	NOMBRE: FELIPE DEL OLMO	Nº 036-A/125